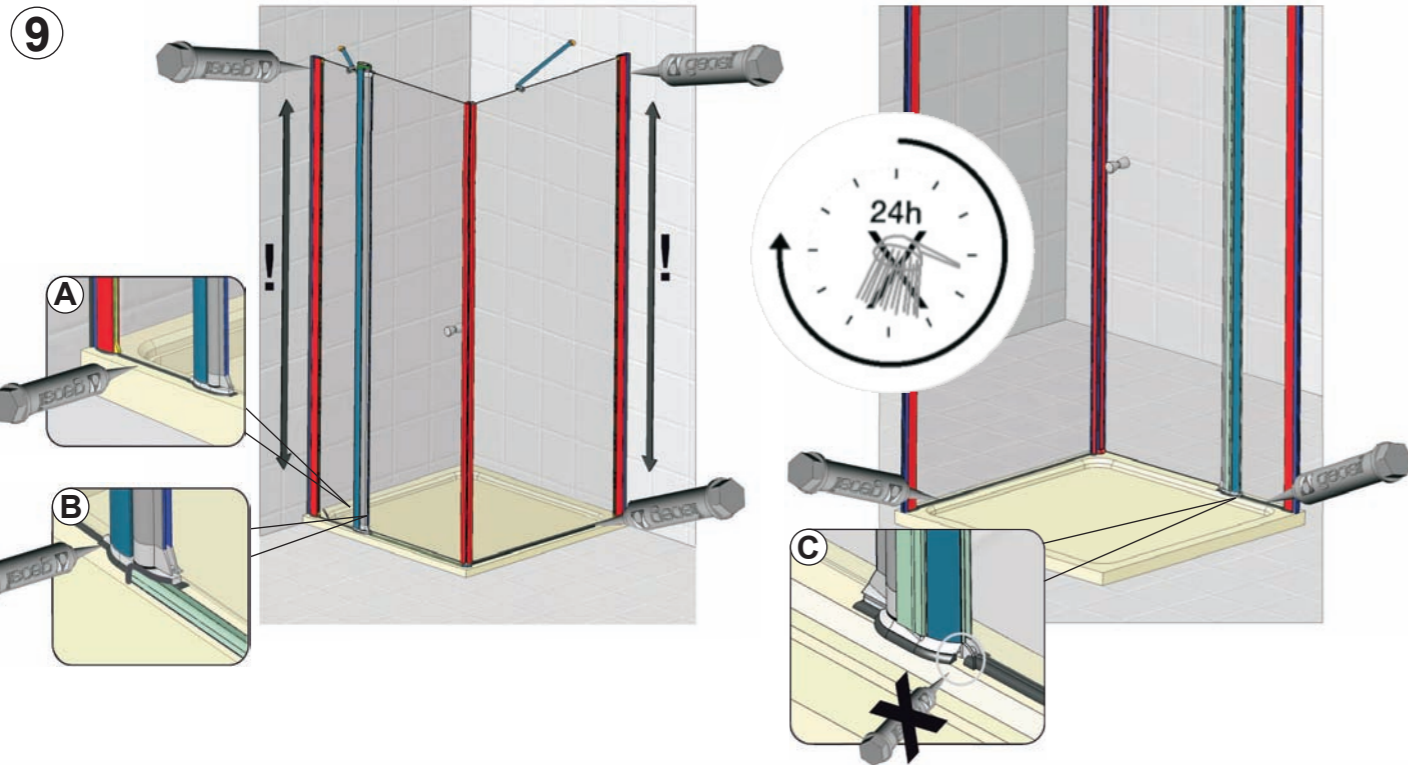
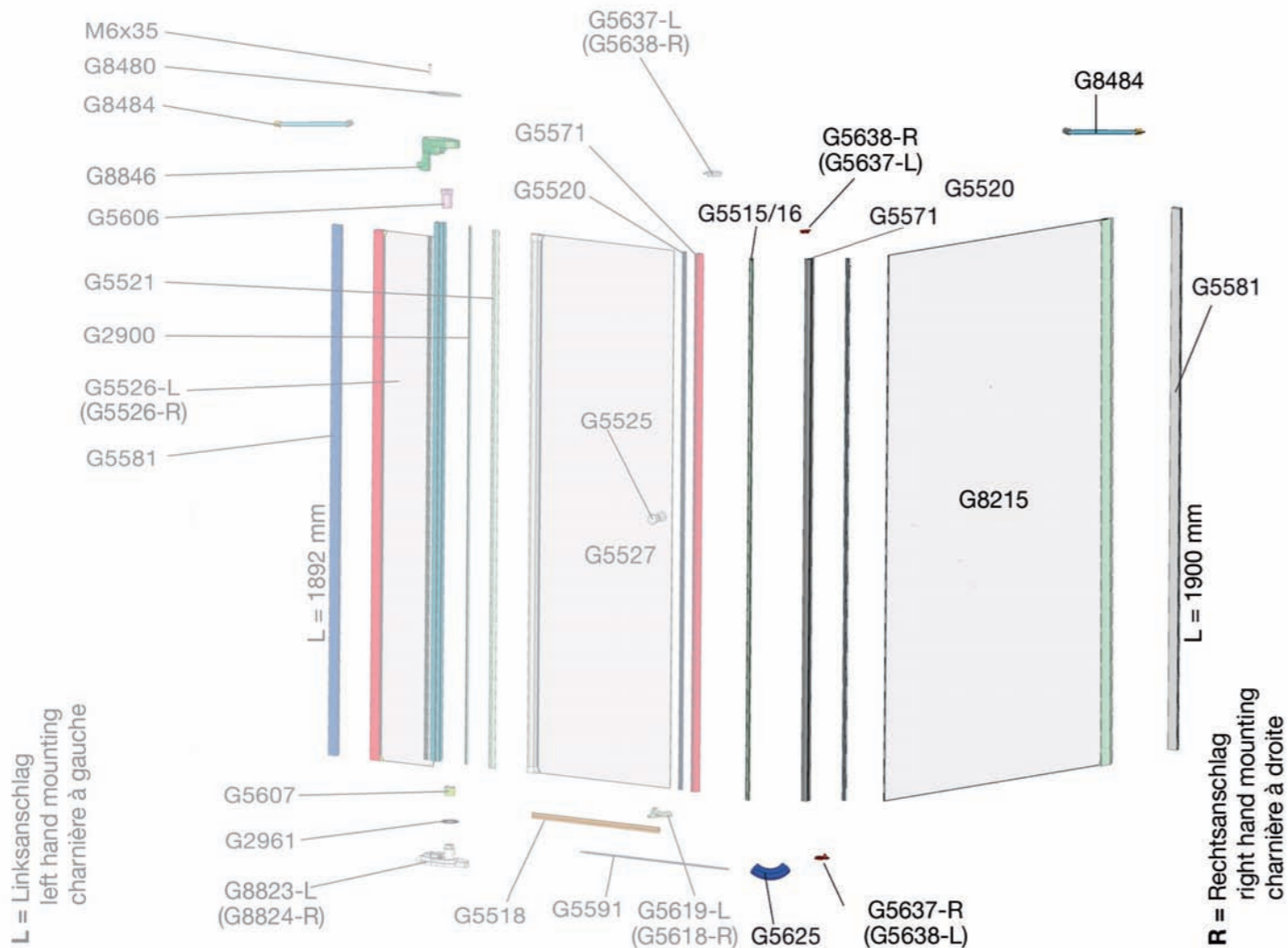


gealba® 1007 Seitenteil / side panel / paroi latérale



D Bauteile **GB Construction elements** **F Éléments de construction**



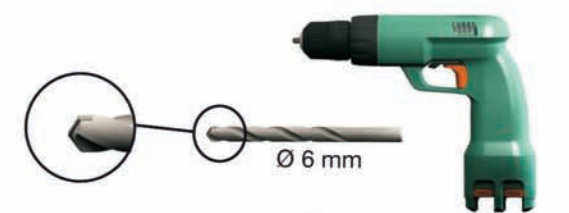
gealba® 1007 Seitenteil / side panel / paroi latérale



Gealba 1007 Seitenteil März 2013/tsk

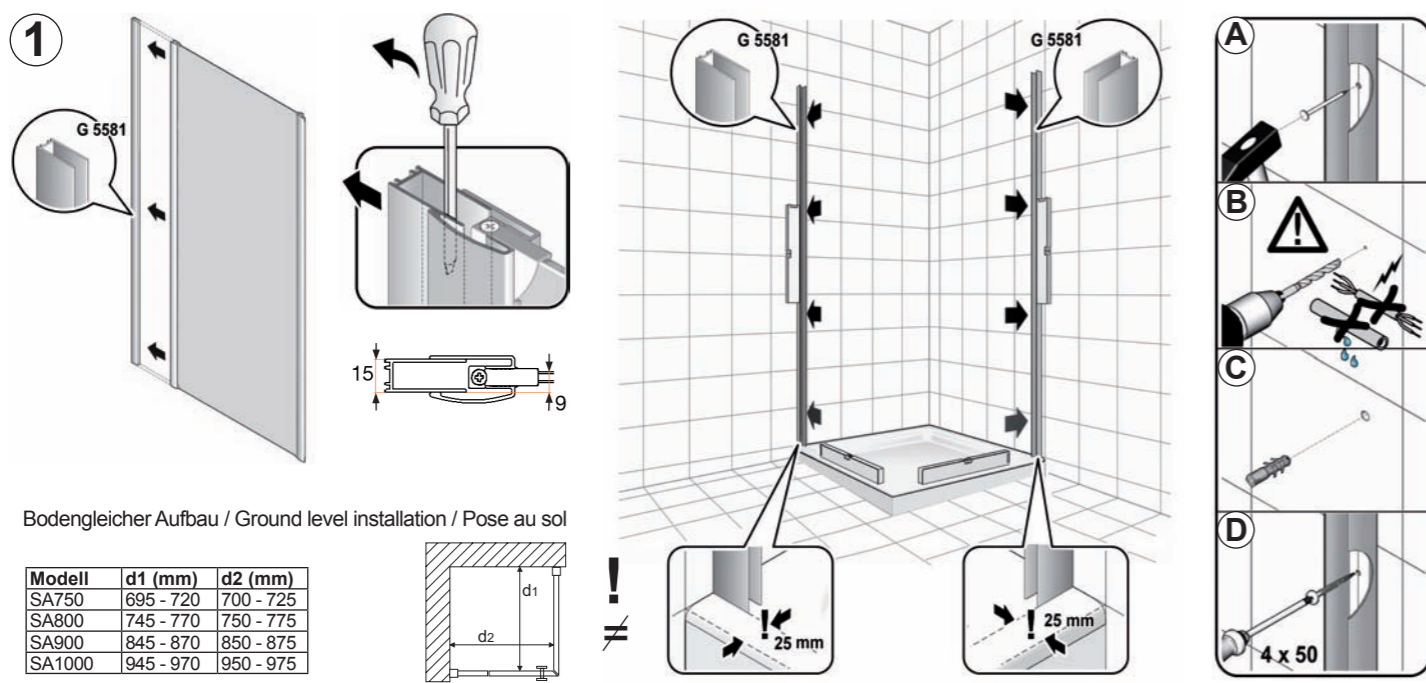
GEO® Duschwände
Spiegelschränke
Acryl- Tassen u. Wannen
... auf Dauer besser

Zum Aufbau benötigen Sie
for mounting you need
pour l'installation il vous faut



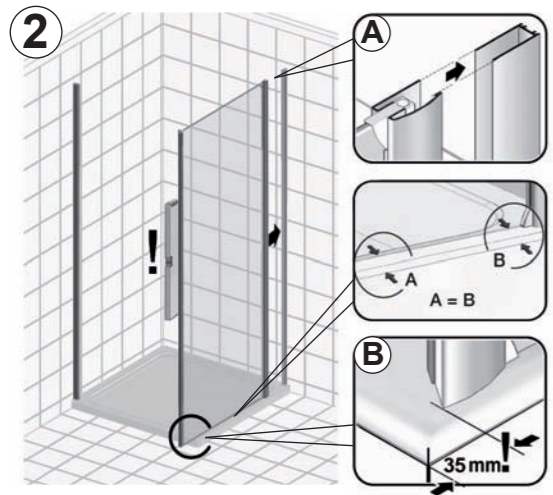
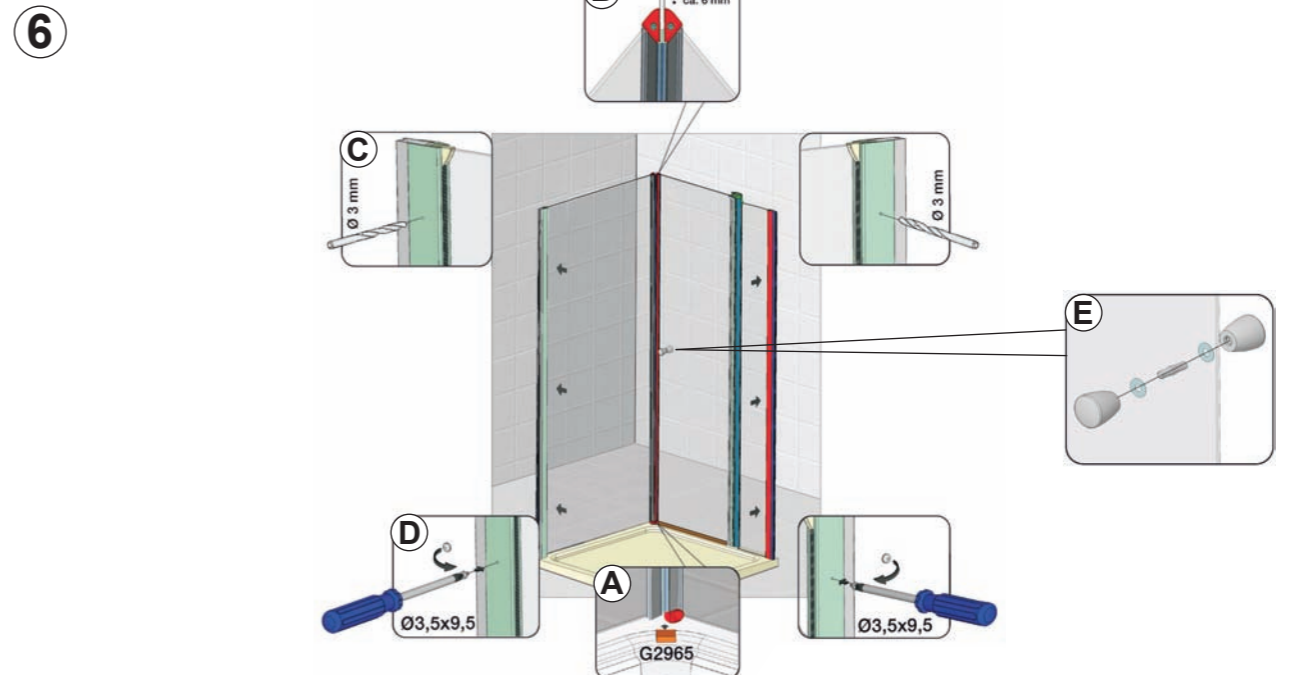
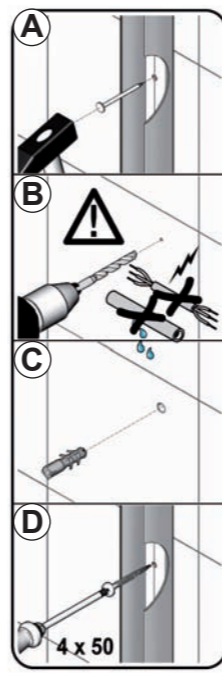
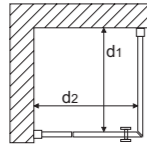
Mitgeliefertes Montagmaterial
supplied assembly material
matériaux pour assemblage





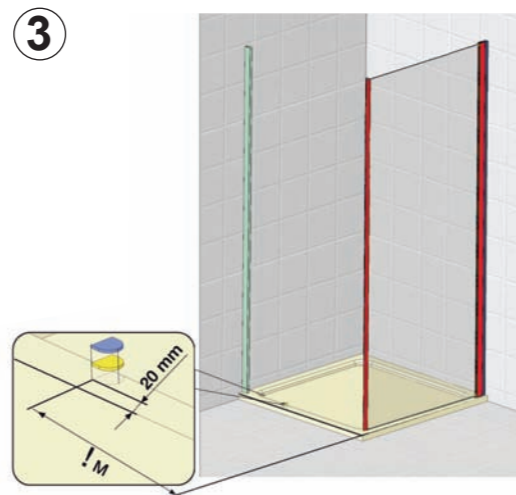
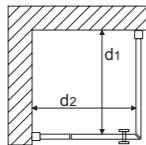
Bodengleicher Aufbau / Ground level installation / Pose au sol

Modell	d1 (mm)	d2 (mm)
SA750	695 - 720	700 - 725
SA800	745 - 770	750 - 775
SA900	845 - 870	850 - 875
SA1000	945 - 970	950 - 975



Bodengleicher Aufbau / Ground level installation / Pose au sol

Modell	d1 (mm)	d2 (mm)
SA750	695 - 720	700 - 725
SA800	745 - 770	750 - 775
SA900	845 - 870	850 - 875
SA1000	945 - 970	950 - 975



M: 1000 mm Türe = 606 mm = Modell SA1000
 900 mm Türe = 606 mm = Modell SA900
 800 mm Türe = 606 mm = Modell SA800
 750 mm Türe = 556 mm = Modell SA750

Sondermaß: _____ mm

